



Senior Living Program Fact Sheet (SFY 2007)

INAPIS data is reported to DEA from AAAs and this Fact Sheet represents information about consumers and services provided from July 1, 2006 through June 30, 2007. This Fact Sheet focus is on Elderly persons that received services/benefits from programs offered through the Senior Living Trust Fund. Information on this Fact Sheet comes from the INAPIS Activity Report (State Fiscal Year 2007) which can be found on the DEA website at <http://www.state.ia.us/elderaffairs/services/index.html#NAPIS>

15,705

Number of unduplicated consumers that received one or more services through Senior Living Program (SLP)

27+

Number of Nutrition, Access, In-Home, and Community services provided

136,191

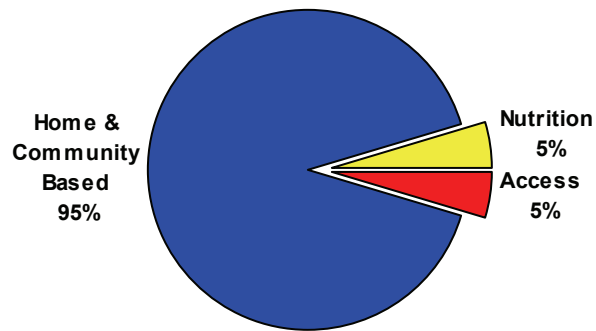
Number of Adult Day Care Hours provided

310,707

Number of Home & Community Based service units provided

Unduplicated Consumers by Service Category

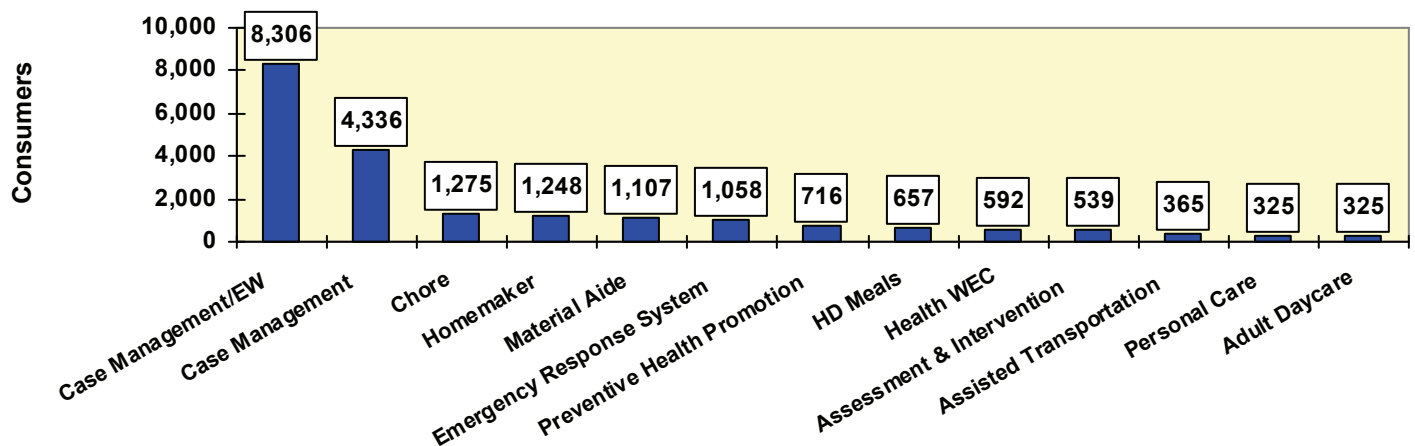
N=15,705



<u>Nutrition</u>	<u>Home & Community Based</u>	<u>Access</u>
744	14,842	774
5%	95%	5%

Unduplicated Consumer Count for Top 13 SLP Funded Services

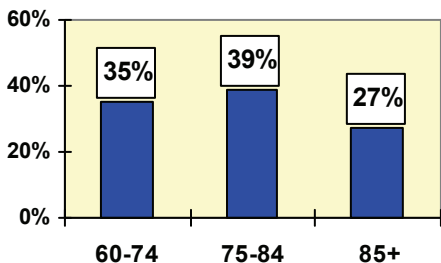
N=15,705



Note: Total Unduplicated Consumers is an unduplicated count for all or a specific service. In other words, if you add the total number of Consumers from all services it is higher than the actual number of persons served across all services, because some people need and receive more than one service. Both Federal and Iowa rule prohibits client registration for persons receiving Legal Assistance.

Age

Unduplicated Consumers by Age Group
% of Total SLP Consumers
N = 15,570

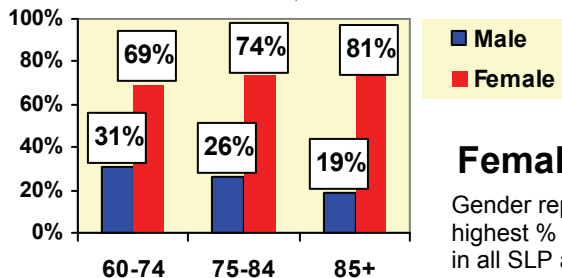


75-84 (39%)

Age group that represents the highest % of Total SLP Consumers.

Age & Gender

Unduplicated Consumers by Age Group & Gender
% of Total SLP Consumers for that Age Group
N = 15,043



Females

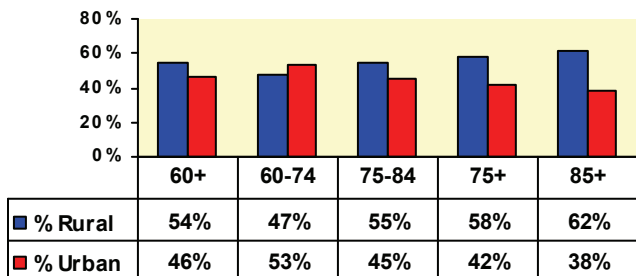
Gender representing the highest % Total Consumers in all SLP age groups.

Rural / Urban

54%

Percentage of 60+ SLP Consumers that lived in a rural area

% of Total INAPIS Consumers by Age Group
N=15,570

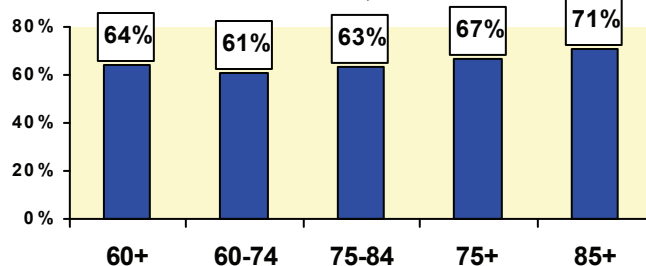


Lives Alone

64%

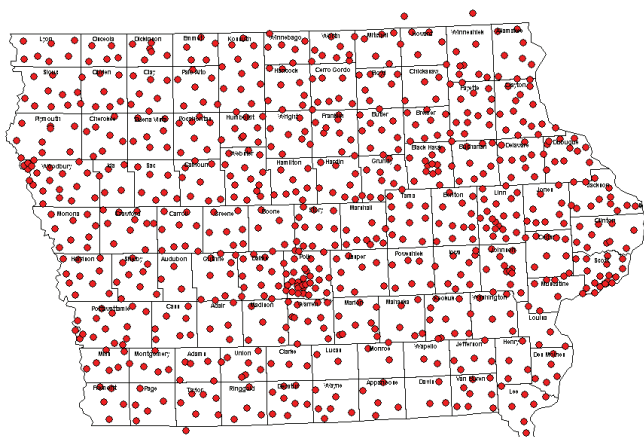
Percentage of 60+ SLP Consumers that lived alone.

% of Total INAPIS Consumers by Age Group
N=15,552



Service Delivery Map

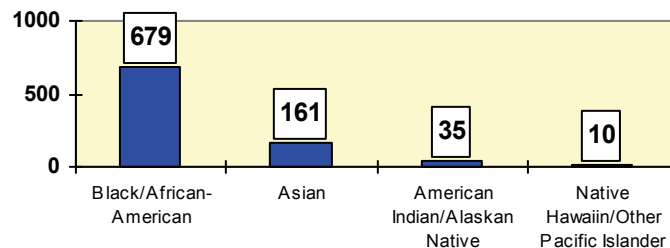
The map below represents the resident zip code location of registered consumers that received one or more services during SFY 2007.



Note: The charts above represent only those consumers where Age, Gender, Rural, Urban & Lives Alone could be determined.

Minority Race

Unduplicated SLP Consumers by Minority Race
N=15,301



Iowa Department of Elder Affairs

Jessie M. Parker Building
510 E 12th Street, Suite 2
Des Moines, IA 50319
Phone: 800-532-3213
Fax: 515-725-3300

We're on the web!
www.state.ia.us/elderaffairs