

PROGRAM

The Program chapter provides information pertaining to the school district organizational structure, curriculum data regarding courses offered and taught and district graduation requirements, school district class sizes for kindergarten through grade three, early childhood including data on preschool enrollments by program type and kindergarten programs, technology expenditures on hardware and software, availability of computers, and an update on Project EASIER. The current chapter also reports suspensions and expulsions for the first time.

School District Organizational Structure

In the mid-1980's, the most common school district organizational structure was the K-6 and 7-12 structure. In 1985-1986, nearly 39 percent of school districts offered this type of structure (see Table 57). In the 2005-2006 school year, less than 3 percent of school districts had this type of organizational structure. Over 41 percent provided a structure that had a system with either a Prekindergarten (PK) or Kindergarten (K) through grade 5, followed by a grade 6-8, and a grade 9-12. Another 31 percent had a similar system of PK or K through grade 6, followed by grades 7 and 8 at the middle school level, and then offering a high school of grades 9-12. Table 58 has the organizational structures of Iowa public schools for the 2005-2006 school year.

Table 57

ORGANIZATIONAL STRUCTURES FOR IOWA PUBLIC SCHOOL DISTRICTS 1985-1986

Structure (Grade Level Included)	Percent of Districts
K-6,7-12	38.9%
K-5,6-8,9-12	18.6
K-6,7-8,9-12	14.2
K-4,5-8,9-12	10.8
K-6,7-9,10-12	7.8
K-8,9-12	7.1
K-5,6-12	0.5
K-3,4-6,7-12	0.5
PK-2,3-5,6-8,9-12	0.5
K-7,8-12	0.5
K-3,4-6,7-8,9-12	0.2
K-4,5-6,7-9,10-12	0.2
K-3,4-8,9-12	0.2
	100.0

Source: Iowa Department of Education, Bureau of Planning, Research, and Evaluation, Basic Educational Data Survey, Class Policies and Procedures File.

Table 58

**ORGANIZATIONAL STRUCTURES FOR IOWA PUBLIC SCHOOL DISTRICTS
2005-2006**

Structure (Grade Levels Included)	Percent of Districts
K-5,6-8,9-12	29.7%
PK-5,6-8,9-12	11.7
K-6,7-8,9-12	21.5
PK-6,7-8,9-12	9.8
K-4,5-8,9-12	10.6
PK-4,5-8,9-12	4.6
K-6,7-12	2.7
PK-6,7-12	2.2
K-3,4-5,6-8,9-12	1.4
K-4,5-6,7-8,9-12	0.8
K-3,4-8,9-12	0.8
K-3,4-6,7-9,10-12	0.3
K-6,7-9,10-12	0.5
PK-6,7-9,10-12	0.3
PK-3,4-6,7-8,9-12	0.5
PK-2,3-5,6,7-8,9-12	0.5
PK-5,6-7,8-9,10-12	0.5
K-3,4-6,7-8,9-12	0.3
PK-2,3-6,7-8,9-12	0.3
PK-3,4-7,8-12	0.3
PK-1,2-5,6-8,9-12	0.3
K-1,2-6,7-12	0.3
	100.0

Source: Iowa Department of Education, Bureau of Planning, Research and Evaluation, Basic Educational Data Survey, Policies and Procedures File.

Note: Figures may not total 100 due to rounding.

Curriculum and Course Enrollments

Prior to 1997-1998 the Iowa Department of Education collected curriculum information using local school district course codes. Since then, curriculum information has been submitted using the National Center of Education Statistics (NCES) course coding structure. The NCES course codes allow for a standardized reporting mechanism to be able to make comparisons of the types of courses offered and taught by school districts.

Curriculum Unit Offerings

Table 59 provides information on the average of units of courses offered and taught by enrollment category. As in previous years, the general trend shows that as the enrollment category size increases, so does the number of course offerings in English/language arts, mathematics, science, social studies and foreign language. Statewide in 2004-2005, the average units of courses offered and taught increased for English/language arts, science, and foreign language.

Table 59

**AVERAGE CURRICULUM UNITS OFFERED AND TAUGHT BY
DISTRICT ENROLLMENT CATEGORY, 2000-2001, 2003-2004 AND 2004-2005**

	Min Units IA Standards	<250	250- 399	400- 599	600- 999	1,000- 2,499	2,500- 7,499	7,500+	State
<i>2000-2001</i>									
Total Number of Districts		32	46	80	101	81	24	9	373
# Districts Operating HS**		14	41	80	101	81	24	9	350
English/Language Arts	6	6.2	6.9	7.0	7.8	9.0	11.8	18.0	8.3
Mathematics	6	6.8	7.3	7.6	8.4	9.3	11.8	13.3	8.6
Science	5	5.0	5.7	5.9	6.7	7.2	10.3	12.3	6.9
Social Studies	5	5.1	5.4	5.7	6.0	6.8	8.2	10.3	6.3
Foreign Language	4	3.4*	3.7*	4.2	4.6	6.7	11.3	18.0	5.7
<i>2003-2004</i>									
Total Number of Districts		34	54	76	93	81	23	9	370
# Districts Operating HS**		13	51	76	93	81	23	9	346
English/Language Arts	6	8.2	7.4	7.4	8.2	9.8	13.1	19.8	8.9
Mathematics	6	7.7	7.3	7.8	8.3	9.8	11.0	16.2	8.8
Science	5	5.4	6.0	5.8	6.7	7.3	9.9	13.0	6.9
Social Studies	5	5.9	5.8	6.0	6.3	6.6	9.5	11.2	6.6
Foreign Language	4	3.4*	4.0	4.3	4.2	6.1	10.2	18.1	5.4
<i>2004-2005</i>									
Total Number of Districts		36	53	72	94	80	23	9	367
# Districts Operating HS**		14	49	72	94	80	23	9	341
English/Language Arts	6	7.8	7.2	7.9	8.1	10.3	13.6	17.4	9.0
Mathematics	6	7.7	7.3	7.7	8.2	9.3	11.8	14.1	8.6
Science	5	5.4	5.9	6.3	6.7	7.6	10.6	12.9	7.1
Social Studies	5	5.6	5.6	5.9	6.1	7.2	9.1	10.9	6.5
Foreign Language	4	3.6*	3.9*	4.2	4.5	6.2	11.0	16.3	5.5

Source: Iowa Department of Education, Bureau of Planning, Research, and Evaluation, Basic Educational Data Survey, Curriculum and Enrollment Files.

*Waiver provisions are available under special circumstances.

**High School.

Foreign Language Enrollments

The estimated percentage of students enrolled in foreign language is calculated by dividing the total enrollment of students enrolled in foreign language courses divided by the total enrollment for grades 9-12. Overall in 2004-2005, the percentage of students enrolled in a foreign language course was approximately 54 percent, continuing the upward trend from previous years. Table 60 displays the number and estimated percentage of students enrolled in foreign language courses.

Table 60

**TOTAL IOWA PUBLIC SCHOOL GRADES 9-12 ENROLLMENT
IN ALL FOREIGN LANGUAGE COURSES BY ENROLLMENT CATEGORY
1985-1986, 2000-2001, 2003-2004 AND 2004-2005**

Enrollment Category	1985-1986		2000-2001		2003-2004		2004-2005	
	No. of Students Enrolled	Est. % of Students Enrolled	No. of Students Enrolled	Est. % of Students Enrolled	No. of Students Enrolled	Est. % of Students Enrolled	No. of Students Enrolled	Est. % of Students Enrolled
< 250	658	20.4%	519	44.4%	518	50.1%	601	52.4%
250-399	1,667	18.2	2,055	42.8	2,511	43.4	2,862	48.8
400-599	2,769	18.9	6,291	45.3	6,714	50.4	6,810	52.6
600-999	5,079	21.8	12,509	48.5	11,929	50.9	12,275	51.7
1,000-2,499	10,536	30.2	22,096	54.7	21,529	52.8	22,172	54.5
2,500-7,499	13,018	42.7	16,078	52.6	16,331	55.2	18,677	62.4
7,500+	13,064	35.9	21,761	56.6	21,400	55.4	19,481*	51.1
State	46,791	30.8	81,309	52.4	80,932	53.0	82,878*	54.4

Source: Iowa Department of Education, Bureau of Planning, Research, and Evaluation, Basic Educational Data Survey, Curriculum and Enrollment Files.

Notes: Estimated percents are based on the assumption that foreign language courses are normally taken in grades 9-12.
*One high school failed to report their curriculum data in 2004-2005.

A listing of the foreign languages offered and the number of students enrolled in each is provided in Table 61. In 2004-2005, Spanish accounted for over 80 percent of the students that were enrolled in foreign language. French and German were the only other foreign languages that accounted for more than 5 percent. Enrollments in all the foreign languages were up by more than 2,000 students in 2004-2005.

Table 61

**FOREIGN LANGUAGE ENROLLMENTS IN IOWA PUBLIC SCHOOLS
GRADES 9-12
1985-1986, 2000-2001, 2003-2004 AND 2004-2005**

Language	1985-1986		2000-2001		2003-2004		2004-2005	
	Number	Percent	Number	Percent	Number	Percent	Number	Percent
Spanish	27,893	59.6%	62,212	76.5%	64,230	79.4%	67,215	81.1%
French	12,837	27.4	11,308	13.9	9,450	11.7	8,998	10.9
German	5,462	11.7	6,221	7.7	5,792	7.2	4,804	5.8
Japanese	21	0.0	493	0.6	647	0.8	632	0.8
Russian	102	0.2	185	0.2	37	<0.1	29	<0.1
Latin	443	0.9	98	0.1	125	<0.2	106	0.1
Chinese	0	0.0	96	0.1	82	0.1	91	0.1
Italian	16	0.0	122	0.2	107	0.1	144	0.2
Other	17	0.0	574	0.7	462	0.6	859	1.0
Total*	46,791	100.00	81,309	100.00	80,932	100.0	82,878**	100.0

Source: Iowa Department of Education, Bureau of Planning, Research, and Evaluation, Basic Educational Data Survey, Curriculum Files.

Notes: *Total may not add due to rounding.

**One high school failed to report their curriculum data in 2004-2005.

Higher Level Mathematics Enrollments

Students enrolled in the mathematics courses of trigonometry and calculus are considered enrolled in higher level mathematics. The estimated percentage of students enrolled in higher level mathematics was calculated by dividing the number of students enrolled in trigonometry and/or calculus divided by the number of students in grades 11 and 12. Statewide the percentage of students in higher level math was nearly 25 percent. The number of districts that offered at least one higher level math course increased to 318 in 2004-2005, up from 315 in 2003-2004. Table 62 provides data on enrollments in higher level math by enrollment category.

Table 62

IOWA PUBLIC SCHOOL ENROLLMENTS IN HIGHER LEVEL MATHEMATICS BY ENROLLMENT CATEGORY, 1985-1986, 2000-2001, 2003-2004 AND 2004-2005								
	<250	250-399	400-599	600-999	1,000-2,499	2,500-7,499	7,500+	State
1985-1986								
Total Number of Districts	52	90	95	97	71	24	8	437
# Districts Operating High School	50	89	95	97	71	24	8	434
Number of Districts Offering								
Higher Level Math	17	20	33	37	40	18	8	173
Pupils Enrolled in HL Math	93	140	355	603	1,551	1,766	2,603	7,111
Percent Females Enrolled in								
Higher Level Math	44.1%	44.3%	44.5%	43.0%	44.6%	45.1%	46.1%	45.1%
Estimated % of all Pupils Enrolled	6.0%	3.1%	4.9%	5.3%	9.2%	12.1%	15.3%	9.7%
2000-2001								
Total Number of Districts	32	46	80	101	81	24	9	373
# Districts Operating High School	14	41	80	101	81	24	9	350
Number of Districts Offering								
Higher Level Math	8	32	75	89	77	23	9	313
Pupils Enrolled in HL Math	69	368	1,153	2,186	4,075	2,845	3,507	14,203
Percent Females Enrolled in								
Higher Level Math	63.8%	56.8%	51.3%	51.7%	49.4%	49.1%	49.0%	50.0%
Estimated % of all Pupils Enrolled	11.2%	15.2%	16.8%	17.4%	20.8%	19.3%	19.9%	19.1%
2003-2004								
Total Number of Districts	34	54	76	93	81	23	9	370
# Districts Operating High School	13	51	76	93	81	23	9	346
Number of Districts Offering								
Higher Level Math	9	43	68	85	78	23	9	315
Pupils Enrolled in HL Math	56	417	1,084	2,068	4,594	2,966	3,428	14,613
Percent Females Enrolled in								
Higher Level Math	50.0%	51.3%	50.6%	49.7%	48.7%	48.4%	47.9%	48.8%
Estimated % of all Pupils Enrolled	10.3%	14.8%	16.6%	17.8%	22.8%	20.7%	19.4%	19.8%
2004-2005								
Total Number of Districts	36	53	72	94	80	23	9	367
# Districts Operating High School	14	49	72	94	80	23	9	341
Number of Districts Offering								
Higher Level Math	12	40	66	89	79	23	9	318
Pupils Enrolled in HL Math*	135	516	1,269	2,442	5,635	4,153	3,897	18,047
Percent Females Enrolled in								
Higher Level Math	48.9%	52.5%	51.6%	52.0%	48.2%	48.2%	48.9%	49.2%
Estimated % of all Pupils Enrolled	22.4%	18.1%	20.1%	21.3%	28.3%	28.9%	22.8%	24.9%

Source: Iowa Department of Education, Bureau of Planning, Research, and Evaluation, Basic Educational Data Survey, Curriculum and Enrollment Files.

Notes: Estimated percents are based on the assumption that higher level mathematics courses are normally taken in grades 11 and 12. Includes calculus and trigonometry.

HL Math indicates Higher Level Math.

*One high school failed to report their curriculum data in 2004-2005.

Higher Level Science Enrollments

Higher level science courses include chemistry and physics. The estimated percentage of students enrolled in chemistry is calculated by dividing the number of students enrolled in chemistry divided by the number of students reported in grade 11. For physics, the estimated percentage of students is calculated by dividing the number of students enrolled in physics by the 12th grade enrollment. Tables 63 and 64 show enrollments for chemistry and physics respectfully.

Chemistry

The estimated percentage of students enrolled in chemistry was at 69.7 percent in 2004-2005. Despite the estimated increase in the percentage of students, the number of districts that offered and taught chemistry in 2004-2005 decreased from the previous year (332 in 2004-2005 vs. 341 in 2003-2004). All districts in the three largest enrollment categories offered at least one course in chemistry for all years displayed. Females accounted for over half of the enrollments in all enrollment categories in 2004-2005 (Table 63).

Table 63

IOWA PUBLIC SCHOOL ENROLLMENTS IN CHEMISTRY BY ENROLLMENT CATEGORY 1985-1986, 2000-2001, 2003-2004 AND 2004-2005

	<250	250-399	400-599	600-999	1,000-2,499	2,500-7,499	7,500+	State
1985-1986								
Total Number of Districts	52	90	95	97	71	24	8	437
Number Districts Operating High School	50	89	95	97	71	24	8	434
Number of Districts Offering Chemistry	40	73	87	96	71	24	8	399
Pupils Enrolled in Chemistry	413	971	1,690	2,946	3,969	4,283	3,673	17,945
Percent Females Enrolled in Chemistry	50.6%	51.3%	52.0%	51.0%	49.3%	48.8%	47.5%	49.5%
Estimated % of all Pupils Enrolled	55.4%	42.4%	46.0%	51.5%	46.3%	57.8%	41.8%	48.2%
2000-2001								
Total Number of Districts	32	46	80	101	81	24	9	373
Number Districts Operating High School	14	41	80	101	81	24	9	350
Number of Districts Offering Chemistry	10	37	78	99	80	24	9	337
Pupils Enrolled in Chemistry	124	689	1,998	4,041	6,464	4,901	6,328	24,545
Percent Females Enrolled in Chemistry	43.5%	56.6%	55.6%	55.1%	54.5%	51.4%	52.5%	53.6%
Estimated % of all Pupils Enrolled	44.8%	55.7%	58.9%	64.8%	65.5%	65.4%	69.7%	65.3%
2003-2004								
Total Number of Districts	34	54	76	93	81	23	9	370
Number Districts Operating High School	13	51	76	93	81	23	9	346
Number of Districts Offering Chemistry	12	49	75	92	81	23	9	341
Pupils Enrolled in Chemistry	130	841	1,979	3,950	6,450	4,872	6,468	24,690
Percent Females Enrolled in Chemistry	55.4%	53.5%	54.5%	55.7%	54.8%	53.3%	52.7%	54.0%
Estimated % of all Pupils Enrolled	53.7%	60.8%	60.8%	69.6%	64.5%	68.3%	71.1%	67.1%
2004-2005								
Total Number of Districts	36	53	72	94	80	23	9	367
Number Districts Operating High School	14	49	72	94	80	23	9	341
Number of Districts Offering Chemistry	10	47	70	93	80	23	9	332
Pupils Enrolled in Chemistry*	156	886	2,022	3,891	7,125	5,633	5,740	25,453
Percent Females Enrolled in Chemistry	54.5%	54.1%	56.6%	55.2%	53.4%	52.9%	53.9%	54.0%
Estimated % of all Pupils Enrolled	52.2%	59.1%	63.8%	67.9%	71.5%	77.9%	66.3%	69.7%

Source: Iowa Department of Education, Bureau of Planning, Research, and Evaluation, Basic Educational Data Survey, Curriculum and Enrollment Files.

Notes: Estimated percents are based on the assumption that chemistry courses are normally taken in grade 11.

*One high school failed to report their curriculum data in 2004-2005.

Physics

Slightly more than 26 percent of 12th graders were enrolled in physics in 2004-2005. Overall, for all years shown, the percentage of 12th graders enrolled in physics has not changed significantly ranging between 25.2 percent in 1985-1986 to 28.9 percent in 2000-2001. Of the 341 school districts that offer high school, 322 reported offering at least one physics course in 2004-2005. Table 64 provides information on physics enrollments by enrollment category.

Table 64

IOWA PUBLIC SCHOOL ENROLLMENTS IN PHYSICS BY ENROLLMENT CATEGORY 1985-1986, 2000-2001, 2003-2004 AND 2004-2005

	<250	250-399	400-599	600-999	1,000-2,499	2,500-7,499	7,500+	State
1985-1986								
Total Number of Districts	52	90	95	97	71	24	8	437
Number Districts Operating High School	50	89	95	97	71	24	8	434
Number of Districts Offering Physics	32	71	86	91	71	24	8	383
Pupils Enrolled in Physics	191	683	897	1,216	1,737	2,303	2,024	9,051
Percent Females Enrolled in Physics	47.6%	36.2%	38.8%	40.2%	37.2%	40.9%	38.4%	39.1%
Estimated % of all Pupils Enrolled	23.4%	30.6%	25.0%	21.6%	21.1%	32.0%	24.6%	25.2%
2000-2001								
Total Number of Districts	32	46	80	101	81	24	9	373
Number Districts Operating High School	14	41	80	101	81	24	9	350
Number of Districts Offering Physics	9	35	75	98	78	24	9	328
Pupils Enrolled in Physics	60	280	870	1,616	2,439	2,178	3,237	10,680
Percent Females Enrolled in Physics	58.3%	48.6%	46.4%	47.0%	43.5%	44.3%	44.5%	45.0%
Estimated % of all Pupils Enrolled	17.7%	23.8%	25.0%	25.4%	25.1%	30.2%	37.7%	28.9%
2003-2004								
Total Number of Districts	34	54	76	93	81	23	9	370
Number Districts Operating High School	13	51	76	93	81	23	9	346
Number of Districts Offering Physics	8	43	70	90	78	23	9	321
Pupils Enrolled in Physics	41	402	774	1,293	2,244	1,909	3,192	9,855
Percent Females Enrolled in Physics	46.3%	46.3%	45.2%	43.2%	40.8%	41.7%	42.8%	42.5%
Estimated % of all Pupils Enrolled	13.5%	28.1%	23.6%	21.8%	22.2%	26.5%	37.3%	26.8%
2004-2005								
Total Number of Districts	36	53	72	94	80	23	9	367
Number Districts Operating High School	14	49	72	94	80	23	9	341
Number of Districts Offering Physics	9	43	69	90	79	23	9	322
Pupils Enrolled in Physics*	60	421	776	1,400	2,258	1,981	2,539	9,435
Percent Females Enrolled in Physics	50.0%	41.6%	45.1%	44.7%	42.1%	43.9%	45.5%	44.1%
Estimated % of all Pupils Enrolled	19.7%	31.0%	24.8%	24.3%	22.7%	27.7%	30.2%	26.2%

Source: Iowa Department of Education, Bureau of Planning, Research, and Evaluation, Basic Educational Data Survey, Curriculum and Enrollment Files.

Notes: Estimated percents are based on the assumption that physics courses are normally taken in grade 12.

*One high school failed to report their curriculum data in 2004-2005.

Computer-Related Course Enrollments

Enrollments in computer-related courses are provided in Table 65. The percentage of students enrolled in computer-related courses is estimated by dividing the number of students enrolled in those courses by the number of students in grades 9-12. Overall, approximately 23 percent of students enrolled in grades 9-12 took at least one computer-related course in 2004-2005. More than 95 percent of districts that operated a high school offered at least one computer-related course in 2004-2005.

Table 65

	<250	250-399	400-599	600-999	1,000-2,499	2,500-7,499	7,500+	State
1985-1986								
Total Number of Districts	52	90	95	97	71	24	8	437
# Districts Operating High School	50	89	95	97	71	24	8	434
# of Districts Offering Comp-Rel Courses	41	72	74	81	65	24	7	364
Pupils Enrolled in Comp-Related Courses	697	1,262	2,047	3,466	4,565	4,250	2,178	18,465
% Females Enrolled in Comp-Rel Courses	46.6%	45.4%	47.6%	46.4%	45.1%	37.2%	42.7%	43.6%
Estimated % of all Pupils Enrolled	21.6%	13.8%	13.8%	14.8%	13.2%	13.9%	6.0%	12.1%
2000-2001								
Total Number of Districts	32	46	80	101	81	24	9	373
# Districts Operating High School	14	41	80	101	81	24	9	350
# of Dist. Offering Comp-Related Courses	13	39	79	100	81	24	9	345
Pupils Enrolled in Comp-Related Courses	349	1,376	4,131	6,967	10,692	5,469	8,844	37,828
% Females Enrolled in Comp-Rel Courses	51.9%	43.3%	44.2%	44.1%	45.1%	39.0%	42.0%	43.2%
Estimated % of all Pupils Enrolled	29.8%	28.6%	29.7%	27.0%	26.5%	17.9%	23.0%	24.4%
2003-2004								
Total Number of Districts	34	54	76	93	81	23	9	370
# Districts Operating High School	13	51	76	93	81	23	9	346
# of Dist. Offering Comp-Related Courses	12	49	74	93	81	23	9	341
Pupils Enrolled in Comp-Related Courses	305	1,570	3,643	6,575	9,857	5,333	7,071	34,354
% Females Enrolled in Comp-Rel Courses	43.9%	44.3%	43.2%	43.5%	41.4%	39.4%	42.9%	42.1%
Estimated % of all Pupils Enrolled	29.5%	27.1%	27.3%	28.0%	24.1%	18.0%	18.3%	22.5%
2004-2005								
Total Number of Districts	36	53	72	94	80	23	9	367
# Districts Operating High School	14	49	72	94	80	23	9	341
# of Dist. Offering Comp-Related Courses	12	43	68	91	79	23	9	325
Pupils Enrolled in Comp-Related Courses*	309	1,645	3,691	6,111	9,949	6,183	6,791	34,679
% Females Enrolled in Comp-Rel Courses	46.6%	46.0%	45.1%	44.5%	41.7%	36.3%	41.1%	41.7%
Estimated % of all Pupils Enrolled	27.0%	28.0%	28.5%	25.8%	24.4%	20.7%	17.8%	22.8%

Source: Iowa Department of Education, Bureau of Planning, Research, and Evaluation, Basic Educational Data Survey, Curriculum and Enrollment Files.

Notes: Estimated percents are based on the assumption that computer-related courses are normally taken in grades 9-12.
*One high school failed to report their curriculum data in 2004-2005.

Graduation Requirements for Mathematics and Science

The Iowa Department of Education has collected graduation requirements for school districts with high schools through the Basic Educational Data Survey (BEDS). Data collected in previous years reflected the requirements of the senior class that graduated that spring. For example,

graduation requirement data collected in the spring of 2005 reflected the graduation requirements of the senior class of 2005. The Department expanded the data collection this year to include the graduation requirements of the class of 2008 (freshman class of 2005). Data reflected in this section will include information for the class of 2008.

Iowa Administrative Code 12.5(14) notes that one course unit is assigned to a course that meets a minimum of 200 minutes per week for 36 weeks or is taught for the equivalent of 120 hours of instruction. A course that meets one 50-minute period each day for two semesters would normally be given two local credits, but would count as one course unit for state reporting purposes.

Tables 66 and 67 provide the average number of mathematics and science units required for graduation by enrollment category respectively. In 2004-2005, the statewide average of units required for graduation increased slightly from 2003-2004 in both mathematics and science. School districts have indicated that for the graduating class of 2008, the graduation requirements for math will increase by 6.4 percent and for science by 9.2 percent. The only enrollment category that did not indicate a change was the 7,500+ enrollment category in the subject of science.

Table 66

AVERAGE NUMBER OF MATHEMATICS UNITS REQUIRED FOR GRADUATION IN IOWA PUBLIC SCHOOLS, 1985-1986, 2003-2004, 2004-2005 AND 2007-2008				
Enrollment Category	1985- 1986	2003- 2004	2004- 2005	2007- 2008
<250	2.00	2.45	2.38	2.50
250-399	2.01	2.53	2.60	2.76
400-599	1.89	2.35	2.37	2.61
600-999	1.91	2.28	2.33	2.49
1,000-2,499	1.77	2.17	2.24	2.31
2,500-7,499	1.49	2.07	2.11	2.25
7,500+	1.69	2.11	2.11	2.33
State	1.88	2.29	2.34	2.49

Source: Iowa Department of Education, Bureau of Planning, Research, and Evaluation, Basic Educational Data Survey, Policies and Procedures Files.

Table 67

AVERAGE NUMBER OF SCIENCE UNITS REQUIRED FOR GRADUATION IN IOWA PUBLIC SCHOOLS, 1985-1986, 2003-2004, 2004-2005 AND 2007-2008				
Enrollment Category	1985- 1986	2003- 2004	2004- 2005	2007- 2008
<250	1.98	2.27	2.31	2.50
250-399	1.99	2.34	2.42	2.60
400-599	1.84	2.20	2.19	2.48
600-999	1.88	2.11	2.15	2.33
1,000-2,499	1.74	2.13	2.16	2.27
2,500-7,499	1.52	2.02	2.02	2.11
7,500+	1.75	2.00	2.00	2.00
State	1.86	2.10	2.17	2.37

Source: Iowa Department of Education, Bureau of Planning, Research, and Evaluation, Basic Educational Data Survey, Policies and Procedures Files.

The frequency distributions for math and science graduation unit requirements for the graduating classes of 2005 and 2008 are displayed in Tables 68 and 69. For the class of 2005, nearly all of the districts required at least 2.0 units of math (98.5 percent) and over 30 percent of districts required at least 3.0 units. Just over 45 percent of districts will require at least 3.0 units of math for the class of 2008 (see Table 68). A similar trend can be seen for the science units required between the classes of 2005 and 2008 (see Table 69).

Table 68

**FREQUENCY DISTRIBUTION OF MATHEMATICS UNITS REQUIRED FOR
GRADUATION BY IOWA PUBLIC SCHOOL DISTRICTS
2004-2005 AND 2007-2008**

Units Required for Graduation	Class of 2004-2005			Class of 2007-2008		
	Number of Districts	Percent of Districts	Cumulative Percent	Number of Districts	Percent of Districts	Cumulative Percent
1.0	1	0.3%	0.3%	0	0.0%	0.0%
1.3	1	0.3	0.6	0	0.0	0.0
1.5	3	0.9	1.5	3	0.9	0.9
2.0	209	61.3	62.8	160	47.1	47.9
2.3	1	0.3	63.0	0	0.0	47.9
2.5	22	6.5	69.5	23	6.8	54.7
3.0	101	29.6	99.1	150	44.1	98.8
4.0	3	0.9	100.0	4	1.2	100.0

Source: Iowa Department of Education, Bureau of Planning, Research, and Evaluation, Basic Educational Data Survey, Policies and Procedures File.

Note: The number of districts represents those districts providing high school programs and does not include districts sending high school students to other districts as a part of whole-grade sharing.

Table 69

**FREQUENCY DISTRIBUTION OF SCIENCE UNITS REQUIRED FOR
GRADUATION BY IOWA PUBLIC SCHOOL DISTRICTS
2004-2005 AND 2007-2008**

Units Required for Graduation	Class of 2004-2005			Class of 2007-2008		
	Number of Districts	Percent of Districts	Cumulative Percent	Number of Districts	Percent of Districts	Cumulative Percent
1.0	7	2.1%	2.1%	0	0.0%	0.0%
1.5	2	0.6	2.6	2	0.6	0.6
2.0	248	72.7	75.4	200	58.8	59.4
2.3	2	0.6	76.0	0	0.0	59.4
2.5	17	5.0	80.9	23	6.8	66.2
3.0	65	19.1	100.0	115	33.8	100.0

Source: Iowa Department of Education, Bureau of Planning, Research, and Evaluation, Basic Educational Data Survey, Policies and Procedures File.

Note: The number of districts represents those districts providing high school programs and does not include districts sending high school students to other districts as a part of whole-grade sharing.

Class Size

Class Size - Overview

Efforts towards reduction in average class size, initiated by the Iowa Early Intervention Block Grant Program continued in 2004-2005. Average class size, defined as the total number of students divided by the total number of classroom sections, remained above the state goal of 17 pupils per classroom for all grade levels in 2004-2005.

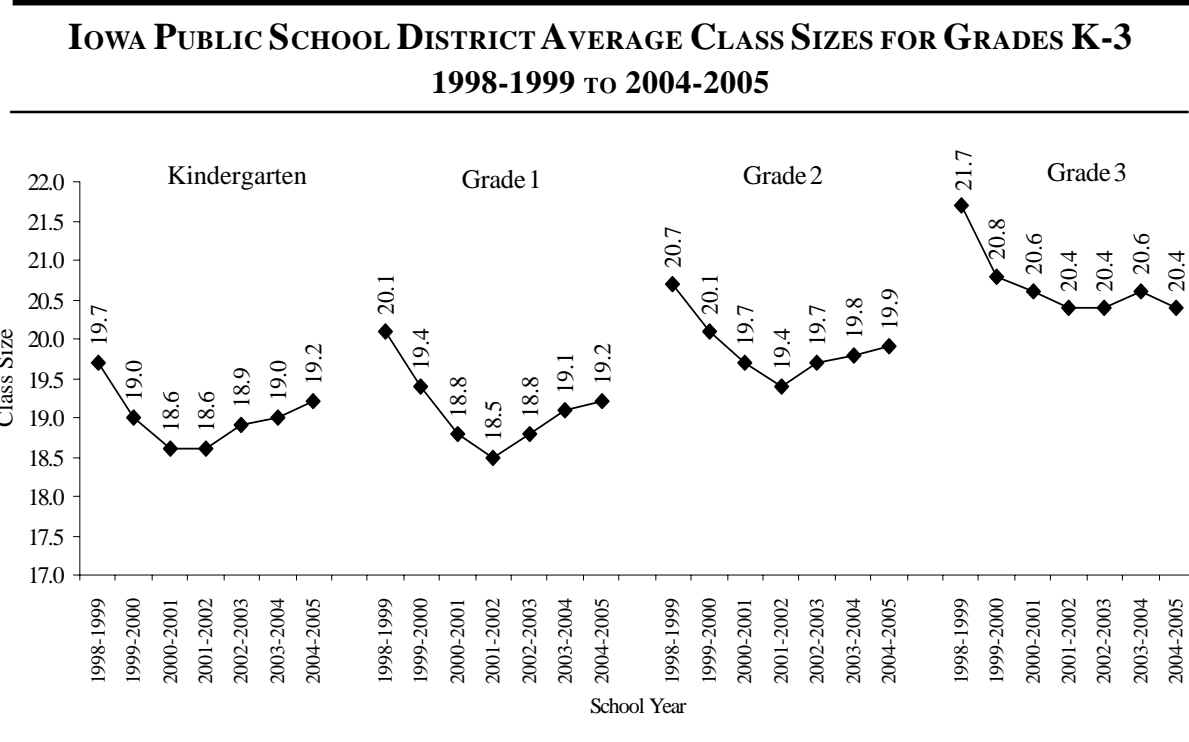
Average class size increased for kindergarten through second in 2004-2005 with kindergarten experiencing the largest increase. Kindergarten grew from 19.0 in 2003-2004 to 19.2 in 2004-2005. The only decline during the period occurred in third grade, which dropped from 20.6 to 20.4 (see Table 70 and Figure 26).

Table 70

IOWA PUBLIC SCHOOL DISTRICT AVERAGE CLASS SIZES FOR GRADES K-3 1998-1999 TO 2004-2005							
Grade	1998-1999	1999-2000	2000-2001	2001-2002	2002-2003	2003-2004	2004-2005
Kindergarten	19.7	19.0	18.6	18.6	18.9	19.0	19.2
1	20.1	19.4	18.8	18.5	18.8	19.1	19.2
2	20.7	20.1	19.7	19.4	19.7	19.8	19.9
3	21.7	20.8	20.6	20.4	20.4	20.6	20.4

Source: Iowa Department of Education, Bureau of Planning, Research, and Evaluation, Basic Educational Data Survey, Class Size Survey Files.

Figure 26



Source: Iowa Department of Education, Bureau of Planning, Research, and Evaluation, Basic Educational Data Survey, Class Size Survey Files.

Despite the increase in average class size in 2004-2005, all grades remained below their levels in the base year 1998-1999. The third grade average experienced the largest decline since 1998-1999 dropping by 1.3 students. Although average class size declined from the base year for first through third grade the drop was less than the decrease in enrollment for those grade levels during the same period (see Table 71 and 72).

Table 71

**IOWA PUBLIC SCHOOL BEDS ENROLLMENTS FOR KINDERGARTEN
THROUGH THIRD GRADE, 1998-1999 AND 2004-2005**

Grade	1998-1999 Enrollment	2004-2005 Enrollment	Absolute Difference in Enrollment	Percent Change in Enrollment
Kindergarten	35,772	36,713	941	2.6%
1	35,699	33,916	-1,783	-5.0
2	35,866	33,626	-2,240	-6.2
3	36,500	33,588	-2,912	-8.0

Source: Iowa Department of Education, Bureau of Planning, Research, and Evaluation, Basic Educational Data Survey, Enrollment Files.

Table 72

**IOWA PUBLIC SCHOOL DECLINE IN AVERAGE CLASS SIZE VS. BEDS ENROLLMENT
1998-1999 TO 2004-2005**

Grade	Percent Change in Class Size	Percent Change in Enrollment
Kindergarten	-2.5%	2.6%
1	-4.5	-5.0
2	-3.9	-6.2
3	-6.0	-8.0

Source: Iowa Department of Education, Bureau of Planning, Research, and Evaluation, Basic Educational Data Survey, Enrollment Files and Class Size Survey Files.

Class Size vs. District Size

Districts in the larger metropolitan areas tended to be above the 17 students per classroom goal. This may be related to district size rather than urban status. Iowa's largest districts are located in metropolitan areas. The largest average class sizes were reported for districts in the 7,500+ enrollment category in 2004-2005.

Smaller districts tended to show average class size under the state goal of 17 students per classroom. For example the smallest average class size for each grade level, kindergarten through third grade, was reported for the less than 250 enrollment category in 2004-2005. As the enrollment category increased so did average class size (see Table 73).

Table 73

**AVERAGE CLASS SIZE COMPARISON FOR IOWA PUBLIC SCHOOL
BY ENROLLMENT CATEGORY, KINDERGARTEN TO THIRD GRADE
2004-2005**

Enrollment Category	Grade			
	K	1	2	3
<250	11.4	11.8	12.7	12.2
250-399	16.5	14.8	16.9	17.5
400-599	17.2	16.6	17.1	17.6
600-999	17.8	18.1	18.2	19.1
1,000-2,499	18.8	19.1	19.8	20.6
2,500-7,499	20.8	20.6	21.3	21.9
7,500+	20.8	20.9	21.8	22.0
State	19.2	19.2	19.9	20.4

Source: Iowa Department of Education, Bureau of Planning, Research, and Evaluation, Basic Educational Data Survey, Class Size Survey Files and Division of Financial and Information Services, Certified Enrollment Files.

Class Size Summary Statistics

Table 74 provides an overview of the number of students, classrooms and teachers for each of the seven years under review. The total number of students increased for kindergarten since the base year of 1998-1999 but declined for first through third grade. The number of classroom sections increased for kindergarten through second grade. The teacher full-time equivalency increased for all grades since 1998-1999.

Class Size Funding and Expenditures

State funding for The Iowa Early Intervention Block Grant Program continued in 2004-2005 at \$29.3 million (see Table 74). Funds could be used by districts to: hire additional staff; provide additional support for students; test students in reading; train teachers; or implement all day, everyday kindergarten.

Table 74

**STATE CLASS SIZE REDUCTION ALLOCATIONS FOR IOWA PUBLIC SCHOOLS
FY 2000 TO FY 2005**

Fiscal Year	State Allocation
FY2000	\$10million
FY2001	\$20million
FY2002	\$30 million
FY2003	\$30million
FY2004	\$29.3million*
FY2005	\$29.3million

Source: Iowa Department of Education

Note: *The FY 2004 appropriation was reduced as a result of an across-the-board cut after the initial appropriation and then received a partial restoration of funds.

In 2004-2005, the majority of Iowa Early Intervention funds went towards staff salaries, 78.0 percent, and benefits, 20.0 percent. Purchased services, equipment and supplies, and other items made up a small portion of expenditures.

Table 75

**FY 2004 IOWA EARLY INTERVENTION BLOCK GRANT PROGRAM
FY 2004 EXPENDITURES BY OBJECT**

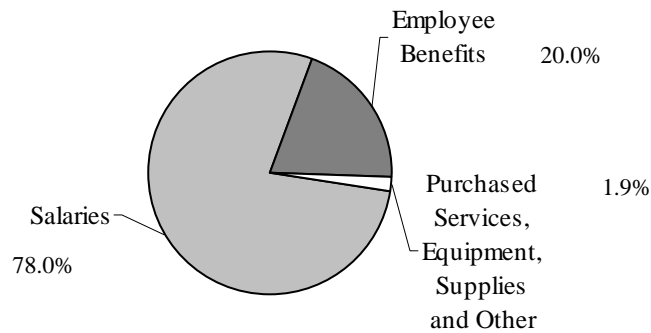
Object Category	Expenditures	Percent
Salaries	\$ 22,862,273	78.0%
Benefits	5,861,692	20.0
Purchased Services	123,640	0.4
Equipment	29,314	0.1
Supplies	326,023	1.1
Other	89,135	0.3
Total	29,292,077	100.0

Source: Iowa Department of Education, Certified Annual Report.

Note: Figures may not total 100 percent due to rounding.

Figure 27

**FY 2004 IOWA EARLY INTERVENTION BLOCK GRANT PROGRAM
FY 2004 EXPENDITURES BY OBJECT**



Source: Iowa Department of Education, Certified Annual Report.

Note: Figures may not total 100 percent due to rounding.

Class Size Report

The complete Class Size Report provides a more detailed analysis of data collected during the fall BEDS. The report is available for download at:

<http://www.state.ia.us/educate/fis/pre/eddata/index.html>

Table 76

**CLASS SIZE SUMMARY STATISTICS FOR KINDERGARTEN THROUGH
GRADE 3 IN IOWA PUBLIC SCHOOLS
1998-1999 TO 2004-2005**

	School Year	N Stu- dents	N Class- rooms	N Teacher FTEs	Class Size					
					Mean	Median	25th %tile	75th %tile	N Min	N Max
Kindergarten	2004-2005	34,627	1,806	1,818.1	19.2	19	17	22	4	30
	2003-2004	34,338	1,807	1,827.4	19.0	19	17	22	3	31
	2002-2003	33,518	1,778	1,804.0	18.9	19	17	21	3	33
	2001-2002	33,380	1,791	1,838.9	18.6	19	16	21	4	41*
	2000-2001	33,004	1,774	1,793.0	18.6	19	16	21	3	34
	1999-2000	33,488	1,764	1,779.9	19.0	19	17	21	4	34
	1998-1999	33,618	1,704	1,613.7	19.7	20	17	23	6	35
<i>Difference</i>	2003-2004 to 2004-2005	289	-1	-9.3	0.2	0	0	0	1	-1
<i>Difference</i>	1998-1999 to 2004-2005	1,009	102	204.4	-0.5	-1	0	-1	-2	-5
Grade 1	2004-2005	32,436	1,692	1,705.8	19.2	19.5	17	22	6	31
	2003-2004	31,941	1,670	1,693.1	19.1	19	17	22	3	30
	2002-2003	31,618	1,684	1,715.2	18.8	19	17	21	4	32
	2001-2002	31,265	1,687	1,729.2	18.5	19	16	21	3	29
	2000-2001	32,016	1,700	1,735.0	18.8	19	17	21	2	30
	1999-2000	32,969	1,701	1,725.8	19.4	19	17	22	5	29
	1998-1999	33,053	1,647	1,644.6	20.1	20	18	23	6	35
<i>Difference</i>	2003-2004 to 2004-2005	495	22	12.7	0.1	0.5	0	0	3	1
<i>Difference</i>	1998-1999 to 2004-2005	-617	45	61.2	-0.9	-0.5	-1	-1	-0	-4
Grade 2	2004-2005	32,186	1,621	1,633.2	19.9	20	18	22	6	31
	2003-2004	32,020	1,619	1,640.5	19.8	20	18	22	6	29
	2002-2003	31,573	1,602	1,630.0	19.7	20	18	22	3	30
	2001-2002	32,196	1,662	1,702.9	19.4	20	17	22	2	30
	2000-2001	33,125	1,679	1,712.8	19.7	20	17	22	2	31
	1999-2000	33,889	1,683	1,702.0	20.1	20	18	23	5	29
	1998-1999	33,151	1,598	1,592.1	20.7	21	19	23	5	35
<i>Difference</i>	2003-2004 to 2004-2005	166	2	-7.3	0.1	0	0	0	0	2
<i>Difference</i>	1998-1999 to 2004-2005	-965	23	41.1	-0.8	-1	-1	-1	1	-4
Grade 3	2004-2005	32,133	1,573	1,586.0	20.4	21	18	23	6	30
	2003-2004	32,014	1,556	1,574.4	20.6	21	19	23	6	31
	2002-2003	32,599	1,597	1,616.5	20.4	21	18	23	7	32
	2001-2002	33,474	1,639	1,682.8	20.4	21	18	23	8	32
	2000-2001	34,293	1,661	1,695.7	20.6	21	19	23	2	30
	1999-2000	34,629	1,662	1,687.0	20.8	21	18	23	6	32
	1998-1999	34,153	1,574	1,578.3	21.7	22	19	24	7	32
<i>Difference</i>	2003-2004 to 2004-2005	119	17	11.6	-0.2	0	-1	0	-1	-1
<i>Difference</i>	1998-1999 to 2004-2005	-2,020	-1	-7.7	-1.3	-1	-1	-1	-1	-2

Source: Iowa Department of Education, Bureau of Planning, Research, and Evaluation, Basic Educational Data Survey, Class Size Survey Files.

Note: The number of students for each grade does not match Basic Educational Data Survey enrollment figures due to the exclusion of multi-age and/or multi-level classrooms from the class size data.

*This classroom has one aide in addition to the teacher.

Technology

Expenditures for Computer Hardware and Software

In 2003-2004, total expenditures and per pupil expenditures for computer software and hardware increased substantially from the previous year. The per pupil amount spent on software (\$17.55) in 2003-2004 was the highest for all years reported and up 17.6 percent from 2002-2003. Expenditure data is collected through the Certified Annual Financial Report from school districts and area education agencies. Table 77 and Figure 31 provide detailed information on computer software and hardware expenditures for 1992-1993 through 2003-2004.

Table 77

**TOTAL EXPENDITURES AND AVERAGE PER PUPIL EXPENDITURES
FOR COMPUTER SOFTWARE AND HARDWARE IN IOWA PUBLIC SCHOOLS
1992-1993 TO 2003-2004**

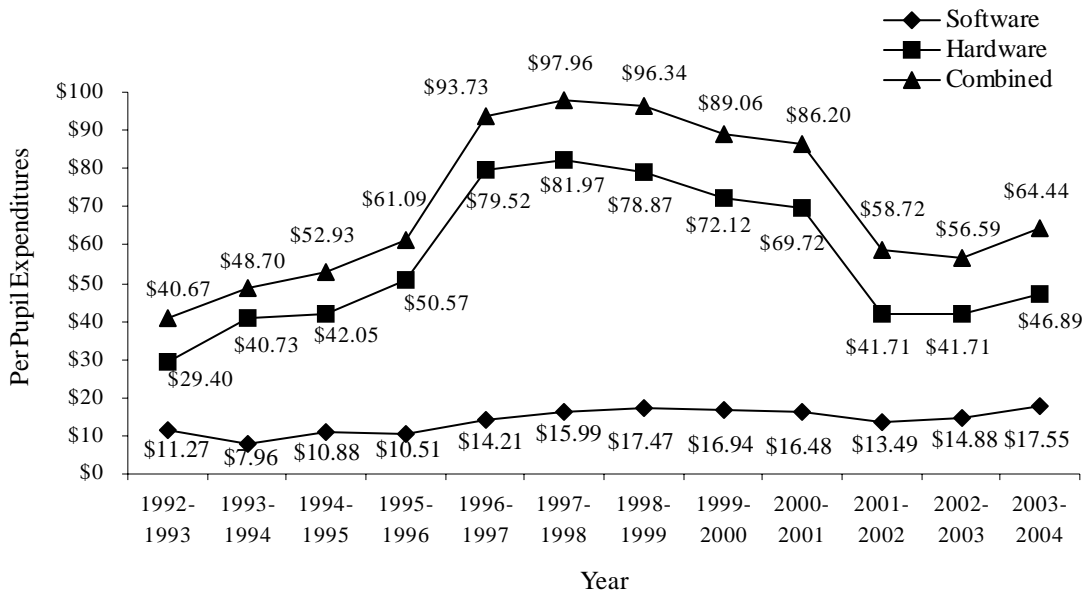
Year	No. of Districts	Total Enrollment	Software		Hardware		Software & Hardware Combined	
			Total Expenditure	PerPupil Expenditure	Total Expenditure	PerPupil Expenditure	Total Expenditure	PerPupil Expenditure
1992-1993	418	495,342	\$5,581,237	\$11.27	\$14,562,080	\$29.40	\$20,143,317	\$40.67
1993-1994	397	497,009	3,957,878	\$7.96	20,244,041	40.73	24,201,919	48.70
1994-1995	390	500,592	5,448,978	10.88	21,049,364	42.05	26,498,342	52.93
1995-1996	384	504,505	5,303,893	10.51	25,513,948	50.57	30,817,841	61.09
1996-1997	379	505,531	7,182,899	14.21	40,201,374	79.52	47,384,273	93.73
1997-1998	377	505,130	8,078,414	15.99	41,405,937	81.97	49,484,351	97.96
1998-1999	375	502,534	8,779,582	17.47	39,636,072	78.87	48,415,654	96.34
1999-2000	375	498,607	8,446,472	16.94	35,960,542	72.12	44,407,014	89.06
2000-2001	374	494,291	8,144,617	16.48	34,462,240	69.72	42,606,857	86.20
2001-2002	371	489,523	6,458,101	13.19	22,287,835	45.53	28,745,936	58.72
2002-2003	371	487,021	7,248,492	14.88	20,312,635	41.71	27,561,127	56.59
2003-2004	370	485,011	8,510,160	17.55	22,743,401	46.89	31,253,561	64.44

Source: Iowa Department of Education, Division of Financial and Information Services, Certified Annual Financial Reports. Per Pupil Expenditures based on Certified Enrollment.

Note: Includes Administrative, Instructional, and all Other Software and Hardware Purchased.

Figure 28

**COMPUTER SOFTWARE AND HARDWARE PER PUPIL EXPENDITURES
IN IOWA PUBLIC SCHOOLS
1992-1993 TO 2003-2004**



Source: Iowa Department of Education, Division of Financial and Information Services, Certified Annual Financial Report and Certified Enrollment Files.

Note: Includes Administrative, Instructional, and all other Software and Hardware Purchased.

Table 78 has information regarding computer software and hardware expenditures by enrollment category for 2003-2004. Average software expenditures per pupil were substantially higher in the 7,500+ enrollment category compared to all other enrollment categories. However, the average hardware expenditures per pupil and total computer expenditures per pupil (hardware and software combined) for the 7,500+ enrollment category were below the state averages. The two smallest enrollment categories (<250 and 250-399) each had average total computer expenditures per pupil well below the state average of \$64.44 and were the only two categories that decreased from the previous year.

Table 78

**IOWA PUBLIC SCHOOL TOTAL AND PER PUPIL EXPENDITURES BY
ENROLLMENT CATEGORY FOR COMPUTER SOFTWARE AND HARDWARE
1994-1995, 2000-2001, 2002-2003 AND 2003-2004**

	Enrollment Category							State
	<250	250-399	400-599	600-999	1000-2499	2500-7499	7500+	
1994-1995								
Number of Districts	28	52	84	109	84	24	9	390
Total K-12 Enrollment	5,661	17,073	41,451	82,458	127,406	95,211	131,332	500,592
Software Expenditure	\$71,172	\$314,310	\$445,257	\$817,254	\$1,536,527	\$1,236,537	\$1,027,921	\$5,448,978
Per Pupil Software Expenditure	\$12.57	\$18.41	\$10.74	\$9.91	\$12.06	\$12.99	\$7.83	\$10.89
Hardware Expenditure	\$141,278	\$1,044,038	\$1,745,604	\$4,011,571	\$5,913,188	\$4,511,180	\$3,682,505	\$21,049,364
Per Pupil Hardware Expenditure	\$24.96	\$61.15	\$42.11	\$48.65	\$46.41	\$47.38	\$28.04	\$42.05
Total Software and Hardware Expenditure	\$212,450	\$1,358,348	\$2,190,861	\$4,828,825	\$7,449,715	\$5,747,717	\$4,710,426	\$26,498,342
Per Pupil Software and Hardware Expenditure	\$37.53	\$79.56	\$52.85	\$58.56	\$58.47	\$60.37	\$35.87	\$52.93
2000-2001								
Number of Districts	26	54	74	104	83	24	9	374
Total K-12 Enrollment	4,851	17,932	37,555	78,916	126,118	96,410	132,509	494,291
Software Expenditure	\$57,993	\$326,854	\$556,505	\$1,121,686	\$2,082,844	\$1,670,035	\$2,328,700	\$8,144,617
Per Pupil Software Expenditure	\$11.95	\$18.23	\$14.82	\$14.21	\$16.52	\$17.32	\$17.57	\$16.48
Hardware Expenditure	\$284,220	\$991,449	\$2,197,191	\$5,179,906	\$9,196,344	\$7,024,183	\$9,588,947	\$34,462,240
Per Pupil Hardware Expenditure	\$58.59	\$55.29	\$58.51	\$65.64	\$72.92	\$72.86	\$72.36	\$69.72
Total Software and Hardware Expenditure	\$342,213	\$1,318,303	\$2,753,696	\$6,301,592	\$11,279,188	\$8,694,218	\$11,917,647	\$42,606,857
Per Pupil Software and Hardware Expenditure	\$70.54	\$73.52	\$73.32	\$79.85	\$89.43	\$90.18	\$89.94	\$86.20
2002-2003								
Number of Districts	31	52	78	98	79	24	9	371
Total K-12 Enrollment	5,952	17,010	39,563	75,279	120,073	96,830	132,314	487,021
Software Expenditure	\$56,606	\$237,117	\$562,326	\$975,801	\$1,683,620	\$1,276,452	\$2,456,570	\$7,248,492
Per Pupil Software Expenditure	\$9.51	\$13.94	\$14.21	\$12.96	\$14.02	\$13.18	\$18.57	\$14.88
Hardware Expenditure	\$263,434	\$810,385	\$1,727,685	\$3,764,752	\$5,529,964	\$4,431,587	\$3,784,828	\$20,312,635
Per Pupil Hardware Expenditure	\$44.26	\$47.64	\$43.67	\$50.01	\$46.06	\$45.77	\$28.60	\$41.71
Total Software and Hardware Expenditure	\$320,040	\$1,047,502	\$2,290,011	\$4,740,553	\$7,213,584	\$5,708,039	\$6,241,398	\$27,561,127
Per Pupil Software and Hardware Expenditure	\$53.77	\$61.58	\$57.88	\$62.97	\$60.08	\$58.95	\$47.17	\$56.59
2003-2004								
Number of Districts	30	55	77	95	81	23	9	370
Total K-12 Enrollment	5,624	17,940	38,809	72,087	123,173	95,379	132,000	485,501
Software Expenditure	\$58,692	\$218,775	\$616,287	\$947,943	\$1,970,164	\$1,400,853	\$3,297,446	\$8,510,160
Per Pupil Software Expenditure	\$10.44	\$12.20	\$15.88	\$13.15	\$15.99	\$14.69	\$24.98	\$17.55
Hardware Expenditure	\$223,286	\$620,102	\$1,818,908	\$3,797,835	\$5,660,896	\$5,574,875	\$5,047,499	\$22,743,401
Per Pupil Hardware Expenditure	\$39.70	\$34.57	\$46.87	\$52.68	\$45.96	\$58.45	\$38.24	\$46.89
Total Software and Hardware Expenditure	\$281,978	\$838,877	\$2,435,195	\$4,745,778	\$7,631,060	\$6,975,728	\$8,344,945	\$31,253,561
Per Pupil Software and Hardware Expenditure	\$50.14	\$46.76	\$62.75	\$65.83	\$61.95	\$73.14	\$63.22	\$64.44

Source: Iowa Department of Education, Division of Financial and Information Services, Certified Annual Financial Reports.

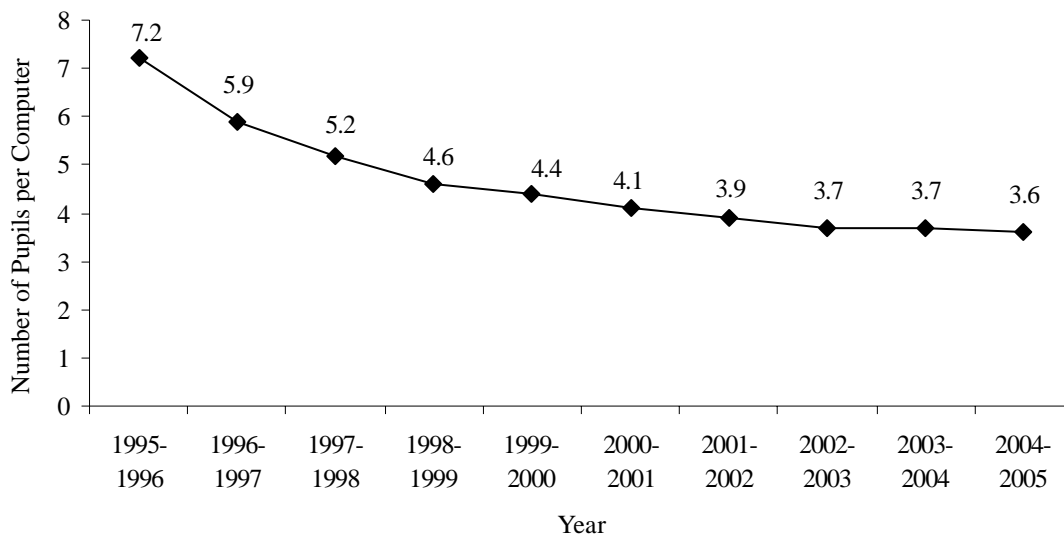
Note: Per pupil expenditures based on Certified Enrollment. Expenditure includes Administrative, Instructional, and all Other Software and Hardware Purchased.

Availability of Computers

Technology data including the availability of computers has been collected from public schools since 1995-1996 through the Basic Educational Data Survey (BEDS). Figure 29 displays pupils per computer in Iowa public schools since 1995-1996. Although the trend shows a decrease in the number of pupils per computer, the decrease has flattened out in recent years.

Figure 29

PUPILS PER COMPUTER IN IOWA PUBLIC SCHOOLS 1995-1996 TO 2004-2005



Source: Iowa Department of Education, Bureau of Planning, Research, and Evaluation, Basic Educational Data Survey, Technology Files, Division of Financial and Information Services, Certified Enrollment Files.

Table 79 and Figure 30 show the number of computers in public schools by enrollment category. Statewide the number of pupils per computer has decreased by 50 percent between 1995-1996 and 2004-2005. Five of the seven enrollment categories had a decrease in the number of pupils per computer of 50 percent or greater between those years. In general as the enrollment category size increases, the pupils per computer also increased.

Table 79

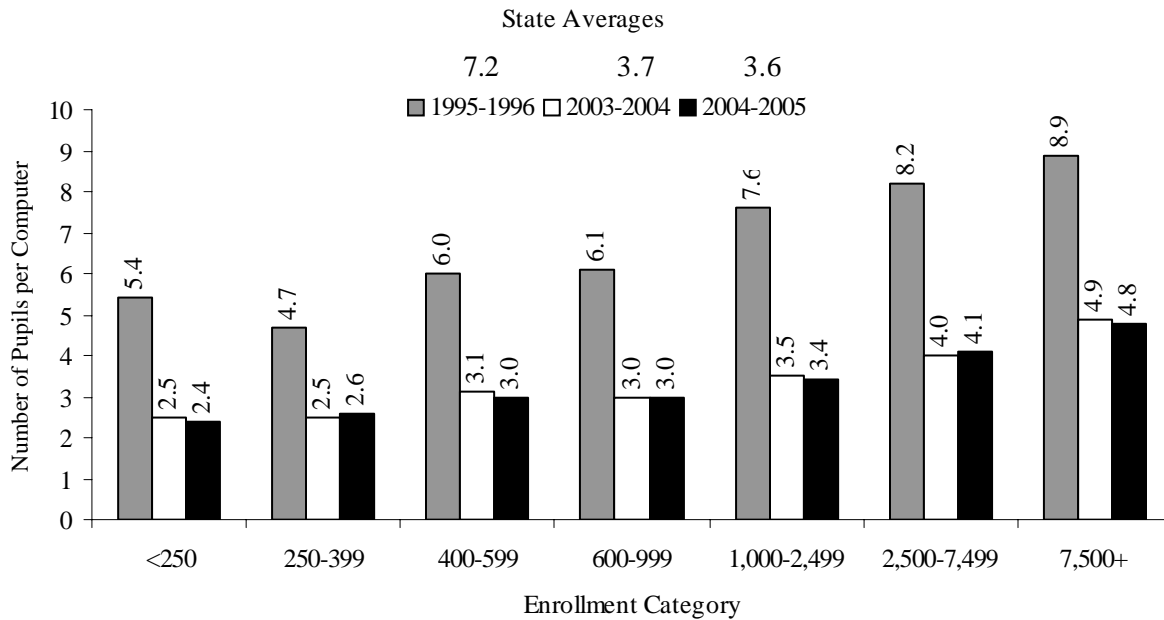
NUMBER OF COMPUTERS IN IOWA PUBLIC SCHOOLS								
BY ENROLLMENT CATEGORY								
1995-1996, 2000-2001, 2002-2003 TO 2004-2005								
	Enrollment Category							
	<250	250-399	400-599	600-999	1,000-2,499	2,500-7,499	7,500+	State
1995-1996								
Total Number of Districts	26	50	81	108	85	25	9	384
Number of Districts Reporting	22	43	74	91	72	22	7	331
Number of Computers	829	2,778	6,043	11,258	13,989	10,010	9,371	54,278
Certified Enrollment	4,509	13,102	36,043	68,185	104,286	82,049	82,983	391,157
Pupils per Computer	5.4	4.7	6.0	6.1	7.6	8.2	8.9	7.2
2000-2001								
Total Number of Districts	26	54	74	104	83	24	9	374
Number of Districts Reporting	26	54	74	104	83	24	9	374
Number of Computers	1,370	5,662	11,082	21,044	30,944	22,274	28,292	120,668
Certified Enrollment	4,851	17,932	37,555	78,916	126,118	96,410	132,509	494,291
Pupils per Computer	3.5	3.2	3.4	3.8	4.1	4.3	4.7	4.1
2002-2003								
Total Number of Districts	31	52	78	98	79	24	9	371
Number of Districts Reporting	31	52	78	98	79	24	9	371
Number of Computers	2,186	6,464	12,782	21,886	33,627	24,423	29,204	130,572
Certified Enrollment	5,952	17,010	39,563	75,279	120,073	96,830	132,314	487,021
Pupils per Computer	2.7	2.6	3.1	3.4	3.6	4.0	4.5	3.7
2003-2004								
Total Number of Districts	30	55	77	95	81	23	9	370
Number of Districts Reporting	29	55	77	95	81	23	9	369
Number of Computers	2,247	7,290	12,532	23,704	35,010	24,146	27,040	131,969
Certified Enrollment	5,624	17,940	38,809	72,087	123,173	95,379	132,000	485,011
Pupils per Computer	2.5	2.5	3.1	3.0	3.5	4.0	4.9	3.7
2004-2005								
Total Number of Districts	30	57	73	95	81	22	9	367
Number of Districts Reporting	30	57	73	95	81	22	9	367
Number of Computers	2,350	7,167	12,370	24,289	36,853	23,244	27,410	133,683
Certified Enrollment	5,672	18,620	37,261	71,979	124,012	94,279	131,511	483,335
Pupils per Computer	2.4	2.6	3.0	3.0	3.4	4.1	4.8	3.6

Source: Iowa Department of Education, Bureau of Planning, Research, and Evaluation, Basic Educational Data Survey, Technology Files, and Division of Financial and Information Services, Certified Enrollment Files.

Note: In 1995-1996, only 86.2 percent of the total 384 school districts reported.

Figure 30

**PUPILS PER COMPUTER IN IOWA PUBLIC SCHOOLS
BY ENROLLMENT CATEGORY
1995-1996, 2003-2004 AND 2004-2005**



Source: Iowa Department of Education, Bureau of Planning, Research, and Evaluation, Basic Educational Data Survey, Technology Files, and Division of Financial and Information Services, Certified Enrollment Files.

Statewide in 2004-2005, the range of average pupils per computer by school type ranged from 3.0 in the junior high schools to 3.9 in the elementary schools. For both years displayed, the ratio of computers per pupil was higher in the elementary schools than the in the high schools, for each enrollment category (see Table 80).

Table 80

**NUMBER OF COMPUTERS AND PUPILS-TO-COMPUTER RATIOS IN IOWA PUBLIC
SCHOOLS BY SCHOOL TYPE WITHIN DISTRICT ENROLLMENT CATEGORY
2003-2004 AND 2004-2005**

	<250	250-399	400-599	600-999	1,000-2,499	2,500-7,499	7,500+	State
2003-2004								
Number of Computers in HS	587	3,489	6,270	10,400	12,368	7,424	7,575	48,113
Pupils per Computer in HS	1.8	2.2	2.7	2.7	3.3	3.8	4.7	3.3
Number of Computers in Jr HS	0	183	439	382	1,088	870	1,663	4,625
Pupils per Computer in Jr HS	0.0	0.6	1.6	2.2	2.6	3.2	3.9	2.9
Number of Computers in Middle Sch.	411	664	1,213	4,383	8,152	4,759	4,348	23,930
Pupils per Computer in Middle Sch.	1.7	1.8	2.7	3.0	3.3	3.8	4.7	3.5
Number of Computers in El. Sch.	1,244	2,946	4,519	8,449	13,268	10,703	12,325	53,454
Pupils per Computer in El. Sch.	2.0	3.0	4.0	3.6	4.0	4.1	5.1	4.1
Number of Computers in Other Sch.	5	8	91	90	134	390	1,129	1,847
Pupils per Computer in Other Sch.	9.6	1.5	3.9	1.0	3.1	3.8	2.9	3.1
2004-2005								
Number of Computers in HS	708	3,430	6,015	10,399	13,549	7,266	7,699	49,066
Pupils per Computer in HS	1.9	2.2	2.7	2.7	3.0	3.7	4.7	3.2
Number of Computers in Jr HS	0	125	568	249	849	853	1,713	4,357
Pupils per Computer in Jr HS	0.0	0.8	1.4	2.4	3.2	3.3	3.5	3.0
Number of Computers in Middle Sch.	334	682	1,147	4,993	8,500	4,418	4,414	24,488
Pupils per Computer in Middle Sch.	2.2	2.1	2.8	2.7	3.2	4.0	4.6	3.4
Number of Computers in El. Sch.	1,300	2,924	4,556	8,541	13,602	10,205	12,578	53,706
Pupils per Computer in El. Sch.	1.8	3.0	3.6	3.4	3.8	4.3	4.8	3.9
Number of Computers in Other Sch.	8	6	84	107	353	502	1,006	2,066
Pupils per Computer in Other Sch.	5.4	3.2	5.7	1.3	2.8	3.7	2.9	3.1

Source: Iowa Department of Education, Bureau of Planning, Research, and Evaluation, Basic Educational Data Survey, Technology and Enrollment Files.

Notes: Enrollment categories are based on Certified Enrollments, while pupil-to-computers ratios are based on BEDS enrollments. Other schools include alternative and special education schools. EL indicates Elementary School, HS indicates High School, and Sch. indicates School.

Internet Access and Wireless Network Availability

Districts report the total number of computers and the number of computers that have internet access and the number of buildings that have a wireless network in the Basic Educational Data Survey (BEDS). All enrollment categories increased the percentage of computers with internet access from the previous year and all were above 91 percent (See Table 81). Buildings with a wireless network also increased from the previous year with nearly 56 percent of public school buildings supplying a wireless network in 2004-2005. Only the 7,500+ enrollment category had less than half their buildings with a wireless network (See Table 82).

Table 81

**TOTAL NUMBER OF COMPUTERS VS.
NUMBER OF INTERNET ACCESSIBLE COMPUTERS BY ENROLLMENT CATEGORY
2003-2004 AND 2004-2005**

	<250	250-399	400-599	600-999	1,000-2,499	2,500-7,499	7,500+	State
2003-2004								
Number of Internet Accessible Computers	1,947	6,799	11,516	22,550	32,905	22,405	24,992	123,114
Total Number of Computers	2,247	7,290	12,532	23,704	35,010	24,146	27,040	131,969
Percent of Internet Accessible Computers	86.6%	93.3%	91.9%	95.1%	94.0%	92.8%	92.4%	93.3%
2004-2005								
Number of Internet Accessible Computers	2,146	6,844	11,817	23,225	35,577	21,792	25,517	126,918
Total Number of Computers	2,350	7,167	12,370	24,289	36,853	23,244	27,410	133,683
Percent of Internet Accessible Computers	91.3%	95.5%	95.5%	95.6%	96.5%	93.8%	93.1%	94.9%

Source: Iowa Department of Education, Bureau of Planning, Research, and Evaluation, Basic Educational Data Survey, Technology Files. Division of Financial and Information Services, Certified Enrollment Files.

Table 82

**WIRELESS NETWORK AVAILABILITY FOR PUBLIC SCHOOLS
BY ENROLLMENT CATEGORY
2003-2004 AND 2004-2005**

	<250	250-399	400-599	600-999	1,000-2,499	2,500-7,499	7,500+	State
2003-2004								
Number of Buildings with Wireless Network	29	58	83	175	215	109	63	732
Total Number of Buildings	49	122	197	302	374	196	262	1,502
Percent of Buildings with Wireless Network	59.2%	47.5%	42.1%	57.9%	57.5%	55.6%	24.0%	48.7%
2004-2005								
Number of Buildings with Wireless Network	35	69	98	202	252	115	80	851
Total Number of Buildings	52	123	192	309	392	194	263	1,525
Percent of Buildings with Wireless Network	67.3%	56.1%	51.0%	65.4%	64.3%	59.3%	30.4%	55.8%

Source: Iowa Department of Education, Bureau of Planning, Research, and Evaluation, Basic Educational Data Survey, Technology Files. Division of Financial and Information Services, Certified Enrollment Files.

Project EASIER (Electronic Access System for Iowa Education Records)

Project EASIER (Electronic Access System for Iowa Education Records) is the Iowa Department of Education's initiative involving the transfer of individual student records. The major components of Project EASIER are:

- 1) Sending individual student data electronically from Iowa school districts to the Department of Education to develop state and federal reports;
- 2) Electronically sending high school transcripts to colleges and universities;
- 3) Enabling school districts to electronically exchange student records when students transfer to other school districts within the state of Iowa.

At the beginning of the 2004-2005 school year, the Iowa Department of Education implemented the Iowa Student Identifier/Locator System. The system assigned a unique student ID to each public PK-12 student attending a public school in Iowa. The ID was integrated with the Project EASIER data collection and all public districts and schools submitted student level records through Project EASIER in the fall of 2004 and the spring of 2005. As of the end of September 2005, approximately 580,000 state ID's had been assigned to public and nonpublic students.

Project EASIER was expanded to enable some high schools to send transcripts electronically to Iowa State University and the University of Northern Iowa in 2001-2002. The next phases of Project EASIER will include the sending of electronic transcripts from all Iowa schools to postsecondary institutions and the electronic transmission of data from district-to-district as students transfer schools within the state of Iowa.

For additional information regarding Project EASIER, visit the Project EASIER website at: <http://www.state.ia.us/educate/fis/pre/pe/index.html>

Early Childhood Education

Iowa public school districts offered a variety of programs geared toward early childhood in 2004-2005. Data on these preschool, child development and childcare programs were collected via the Basic Educational Data Survey (BEDS) in the spring of 2005.

Kindergarten Programs

All-day, every day kindergarten was the predominant kindergarten program type for most Iowa public school districts in 2004-2005. Tables 83 and 84 show the number of districts by kindergarten program type. Districts that did not offer an all-day, every day program typically offered a half-day program or a program which transitioned to all-day every day by the end of the school year. An example of this, starting the school year at three days a week and going five days a week by the end of the school year.

Some districts offered more than one program option for their kindergarten students. These districts offered a half-day kindergarten option in addition to the all-day, every day option and allowed parents to choose which program their child attended.

Table 83

**NUMBER AND PERCENT OF IOWA PUBLIC SCHOOL DISTRICTS OFFERING
ALL-DAY, EVERY DAY, TWO-SEMESTER KINDERGARTEN PROGRAMS
1985-1986 TO 2004-2005**

Year	Number of Districts	Percent of Districts
1985-1986	110	25.2%
1986-1987	120	27.5
1987-1988	134	30.7
1988-1989	151	34.9
1989-1990	163	37.8
1990-1991	180	41.9
1991-1992	199	46.8
1992-1993	219	52.4
1993-1994	228	57.4
1994-1995	242	62.1
1995-1996	257	66.9
1996-1997	258	68.1
1997-1998	279	74.0
1998-1999	290	77.3
1999-2000	305	81.3
2000-2001	339	90.6
2001-2002	347	93.5
2002-2003	350	94.3
2003-2004	351	95.1
2004-2005	354	96.5

Source: Iowa Department of Education, Bureau of Planning, Research, and Evaluation, Basic Educational Data Survey, Policies and Procedures and Early Childhood Files.

Note: Prior to 2002-2003, districts reported one program type as their predominant kindergarten program. Starting in 2002-2003 the predominant program was selected based on the program offered by the largest number of buildings in the district.

All-day, every day, two semester kindergarten was more common for smaller districts than larger districts in 2004-2005. All of the districts in the <250 and 400-599 enrollment categories offered all-day, every day, two semester kindergarten. Only one district in the 250-399 enrollment category did not offer all-day, every day, two semester kindergarten in 2004-2005. This district offered a program which went three days a week for the first quarter and then went all-day, every day for the remainder of the school year.

Table 84

**IOWA PUBLIC SCHOOL KINDERGARTEN PROGRAM TYPE
2004-2005**

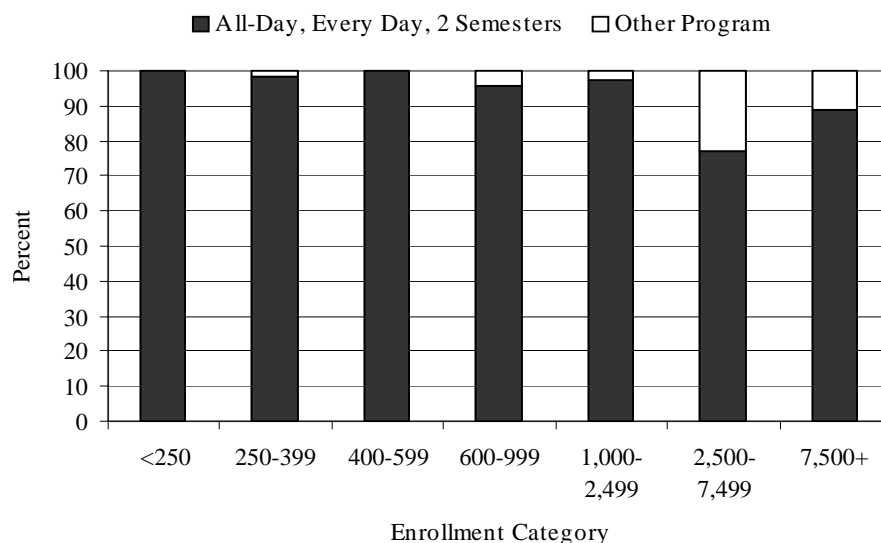
Enrollment Category	Total Number of Districts	All-Day, Every Day, 2 Semesters		All Others	
		Number of Districts	Percent in Category	Number of Districts	Percent in Category
<250	30	30	100.0%	0	0.0%
250-399	57	56	98.2	1	1.8
400-599	73	73	100.0	0	0.0
600-999	95	91	95.8	4	4.2
1,000-2,499	81	79	97.5	2	2.5
2,500-7,499	22	17	77.3	5	22.7
7,500+	9	8	88.9	1	11.1
State	367	354	96.5	13	3.5

Source: Iowa Department of Education, Bureau of Planning, Research, and Evaluation, Basic Educational Data Survey, Early Childhood File.

Note: Prior to 2002-2003 districts reported one program type as their predominant kindertargen program. Starting in 2002-2003 the predominant program was selected based on the program offered by the largest number of buildings in the district.

Figure 31

**PERCENT OF IOWA PUBLIC SCHOOL DISTRICTS WITH ALL-DAY, EVERY DAY, TWO-SEMESTER KINDERGARTEN PROGRAM BY ENROLLMENT CATEGORY
2004-2005**



Source: Iowa Department of Education, Bureau of Planning, Research, and Evaluation, Basic Educational Data Survey, Early Childhood File.

Child Development/Preschool Programs

The number of districts offering a child development/preschool program increased since 1998 (see Table 85). In 2004-2005, 62.7 percent of public school districts indicated that they offered a regular education preschool program. Total enrollment for the preschool programs increased in 2004-2005 as well. The largest preschool enrollment was reported for the Tuition Child Development/Preschool program. (Also see Tables 86 and 87.)

Table 85

IOWA PUBLIC SCHOOL DISTRICTS OFFERING PRESCHOOL 1997-1998 TO 2004-2005		
Year	Number of Districts	Preschool Enrollment
1997-1998	163	6,860
1998-1999	168	7,389
1999-2000	163	7,446
2000-2001	163	7,021
2001-2002	171	7,660
2002-2003	192	8,477
2003-2004	211	9,778
2004-2005	230	10,899

Source: Iowa Department of Education, Bureau of Planning, Research, and Evaluation, Basic Educational Data Survey, Early Childhood Files.

Note: These figures do not include special education programs.

Table 86

IOWA PUBLIC SCHOOL PRESCHOOL ENROLLMENTS BY ENROLLMENT CATEGORY 1997-1998 TO 2004-2005								
Enrollment Category	Preschool Enrollment							
	1997- 1998	1998- 1999	1999- 2000	2000- 2001	2001- 2002	2002- 2003	2003- 2004	2004- 2005
<250	203	246	190	220	295	337	358	405
250-399	417	459	641	554	523	600	793	845
400-599	551	837	652	936	868	1,031	1,129	1,166
600-999	1,606	1,571	1,398	1,433	1,630	1,597	1,784	2,250
1,000-2,499	1,118	1,470	1,392	1,337	1,515	1,531	1,784	1,783
2,500-7,499	865	826	635	810	785	831	1,017	1,148
7,500+	2,100	1,980	2,538	1,731	2,044	2,550	2,913	3,302
State	6,860	7,389	7,446	7,021	7,660	8,477	9,778	10,899

Source: Iowa Department of Education, Bureau of Planning, Research, and Evaluation, Basic Educational Data Survey, Early Childhood Files.

Note: These figures do not include children in special education preschool programs.

Table 87

**IOWA PUBLIC SCHOOL PRESCHOOL PERCENT ENROLLMENT
BY ENROLLMENT CATEGORY
1997-1998 TO 2004-2005**

Enrollment Category	Percent of Preschool Enrollment								Certified Enrollment	
	1997-1998	1998-1999	1999-2000	2000-2001	2001-2002	2002-2003*	2003-2004	2004-2005	2004-2005 Number	2004-2005 Percent*
<250	3.0%	3.3%	2.5%	3.1%	3.9%	4.0%	3.7%	3.7%	5,672	1.2%
250-399	6.1	6.2	8.6	7.9	6.8	7.1	8.1	7.8	18,621	3.9
400-599	8.0	11.3	8.8	13.3	11.3	12.2	11.5	10.7	37,261	7.7
600-999	23.4	21.3	18.8	20.4	21.3	18.8	18.2	20.6	71,979	14.9
1,000-2,499	16.3	19.9	18.7	19.0	19.8	18.1	18.2	16.4	124,012	25.7
2,500-7,499	12.6	11.2	8.5	11.5	10.2	9.8	10.4	10.5	94,279	19.5
7,500+	30.6	26.8	34.1	24.7	26.7	30.1	29.8	30.3	131,511	27.2
State	100.0	100.0	100.0	100.0	100.0	100.0	100.0	100.0	483,335	100.0

Source: Iowa Department of Education, Bureau of Planning, Research, and Evaluation, Basic Educational Data Survey, Early Childhood Files.

Notes: These figures do not include children in special education preschool programs.

*Figures may not total 100 percent due to rounding.

School Age Child Care

Iowa public school districts offered a variety of before school, after school, holiday and summer child care programs in 2004-2005. After school programs were the most common child care program in 2004-2005 with 135 districts offering such a program with over 25,000 students participating (Table 88).

Table 88

**IOWA PUBLIC SCHOOL DISTRICTS OFFERING SCHOOL AGE CHILD CARE
1997-1998 TO 2004-2005**

Year	Number of Districts Offering			
	Before School	After School	Holiday	Summer
1997-1998	89	106	43	61
1998-1999	98	114	44	65
1999-2000	92	113	38	67
2000-2001	90	117	41	67
2001-2002	90	114	35	62
2002-2003	90	113	40	70
2003-2004	102	130	47	81
2004-2005	104	135	47	85

Source: Iowa Department of Education, Bureau of Planning, Research, and Evaluation, Basic Educational Data Survey, Early Childhood Files.